

sculpture  
on the farm

2018



“Fosterton” 824 Fosterton Road Dungog NSW 2420

Gala Opening - Friday 28 September  
Saturday 29 September to Monday 1 October

[www.sculptureonthefarm.com](http://www.sculptureonthefarm.com)





Supported by the



RELIANCE MOTOR COMPANY





## **Welcome from the NSW Government**

On behalf of the NSW Government, welcome to the inaugural **Sculpture on the Farm** exhibition in Dungog.

The NSW Government is proud to support this exhibition at the picturesque farm, “Fosterton”, through its tourism and major events agency, Destination NSW.

This is an exciting event and a unique tourism concept for the region. Tourism is essential to the economies of regional NSW and this event will add a new, cultural element to the overall experience of touring the Dungog region.

Sculptors from all over Australia have contributed works to this prestigious event, and the significant acquisitive prize will extend the benefits of **Sculpture on the Farm** to the whole Dungog Shire beyond the four days of the exhibition.

I'd like to thank all the volunteers and committee members involved in the staging of this wonderful event and to all the sculptors, thank you for your creativity and I wish you all great success.

**The Hon. Adam Marshall MP**  
**Minister for Tourism and Major Events**





In early 2018 a committee for the not for profit **Sculpture on the Farm Inc** came into being and its five members enthusiastically embraced a mission statement which nurtures the importance of a strong and engaged community ...

*"Sculpture on the Farm Inc will engage with sculptors, the local community of Dungog and the broader community to encourage participation in and understanding of the arts, in particular sculpture. An exhibition of sculpture and other events may be held from time to time in the Dungog region to raise awareness of public sculpture and to raise funds to further the association's objects, including the possible purchase of public sculpture for the community."*

In line with this mission, as chair of **Sculpture on the Farm Inc.**, I am very proud to have brought this inaugural exhibition to fruition as a partner event in association with the 2018 Dungog Festival.

We are thrilled to present in 2018 one hundred works by sculptors from New South Wales, including sculptors from the Dungog Shire, Queensland, Victoria, Tasmania and the Australian Capital Territory.

Everyone attending this exhibition is a very welcome visitor to "Fosterton" and we hope that you will go home with an enduring and increased appreciation of the importance of sculpture in the public domain.

Along with my husband, John, we certainly hope that you enjoy your visit to "Fosterton" and that you will return to the Dungog region before too long.

Philippa Graham  
Chair  
**Sculpture on the Farm Inc**

"Fosterton"  
824 Fosterton Road,  
Dungog, NSW 2420



## Sculpture on the Farm Judging Panel 2018

An eminent artist, a progressive gallery director and a leader in development of local communities - all with a strong commitment to the arts in regional communities.

**Paul Selwood**



**Paul Selwood** based in Wollombi, is one of Australia's preeminent sculptors, creating beautifully fluid, complex works, often from a single sheet of steel, through his cut and fold technique. Artist and Government Architect, Peter Poulet, recently wrote, "Paul exemplifies and has given me an unwavering belief in the power of the sculptor and sculpture to speak to us viscerally and this commitment and passion is evident in a lifetime of evolution, excellence and acknowledgements."

**Brigette Uren**



**Brigette Uren** Director of the Maitland Regional Art Gallery is highly regarded as a relationship builder who achieves win-win outcomes for the regional communities she serves. Based in Vacy with a young family, Brigette works to achieve outstanding business results and engagement levels for museums and galleries, implementing innovative artistic programs, driving philanthropic opportunities, and connecting communities to robust cultural product, several times to award winning standard.

**Coralie Nichols**



**Coralie Nichols** General Manager, Dungog Shire Council has worked in NSW, the NT and Queensland predominantly in local government and the not for profit sector. Coralie was a finalist in the 2017 Telstra Business Women's Awards. Dungog Mayor Tracy Norman said Coralie "has a unique and broad base of skills that includes executive leadership, lobbying and advocacy, community engagement, organisational transformation and change management". She has a keen interest in the arts.

## Program

### Friday 28 September:

5pm Gala Opening

6pm Official opening by Brigette Uren,

Director of the Maitland Regional Art Gallery

Announcement of the prizes by judge Paul Selwood

- **Sculpture on the Farm Acquisitive Prize \$10,000**
- **The Bloomfield Prize \$500**
- **The Sculptors Society Prize for Indoor Work \$300**

Announcement of **The Norco Prize for local Dungog Shire Artist \$200**

- Coralie Nichols, General Manager of Dungog Shire Council

### Saturday 29 September and Sunday 30 September:

9am Exhibition opens - Entry \$5, Catalogue \$5

Sculpture rambles with artist Pennie Pomroy throughout the day as she chats with sculptors about their works

5pm Exhibition closes

### Monday 1 October:

9am Exhibition opens - Entry Free

11am Announcement of the **Sculpture on the Farm People's Choice Award** by Dungog Councillor John Connors

12 noon Exhibition closes

### *Collection of Sculptures*

*Purchasers and sculptors please collect your works at 12 noon on Monday 1 October, unless prior arrangements have been made.*



## Acknowledgement of our Supporters

**Sculpture on the Farm Inc is very grateful for the important support received from:**

Destination NSW, Crawford's Casting, Farmers Warehouse, Dungog Kitchens, Dungog Shire Events, Boydell's Winery, Australian Galleries, The King Family, The Bloomfield Group, The Sculptors Society, Reliance Motors, Norco Rural, Tinsed Brewery, Dungog Rotary, Hilldale Union Church Committee, Dungog Rural Fire Service, GJWear Training, Robyn Werkhoven.

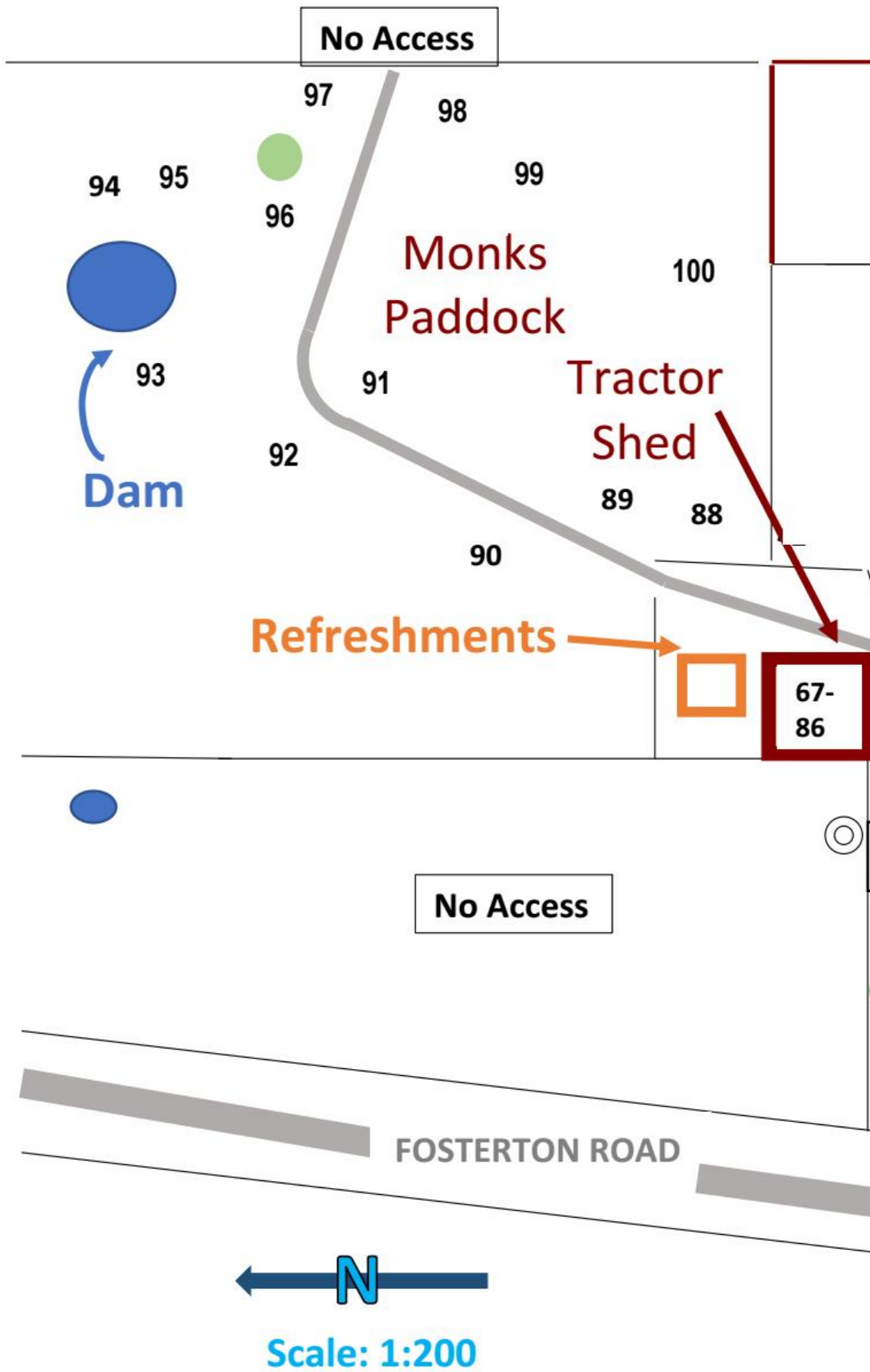
**A special thank you to all sculptors who expressed their confidence in the mission of Sculpture on the Farm in its inaugural year.**

**The many Sculpture on the Farm Volunteers**, including Jane Chandler, Jane Stevenson, Penny Kater, Cathy Oliver, Jenny Creal, Chris Erby, Cas Addison, Sharon Farrell, Pennie Pomroy, Michele Myers, Jenny Robinson, Ted Nobbs and the traffic control volunteers.



### **Sculpture on the Farm Committee**

Lisa Connors, Philippa Graham, Liz Jones, Philippa Wilson and John Graham





sculpture  
on the farm

www.sculptureonthefarm.com



@sculptureonfarm



@sculptureonthefarm

No Access

Main House  
Gallery

Toilets



67-  
86

7 - 41

45 - 51

56 - 59

Free Bus

Coach  
Parking

Cattle  
Yards

Car  
Parking



**1. Peter Tilley**

***Inside the Mirror 1/3***

Cast iron, polished stainless steel, corten steel

170 x 45 x 35cm

**\$10,000**

*My recent works are concerned with the symbolic effects of the cast shadow. The imagery draws on the Greek legend of Narcissus and Jung's theory of the shadow as the 'dark side of the self'.*



**2. Jonas Kaltenbach**

***Twisted***

Steel

130 x 30 x 60cm

**\$4,500**

*Twisted is about freeing up rigidity.*



**3. Jan Shaw**

***Shield***

Bronze

70 x 45 x 50cm

**\$3,500**

*To threaten and retreat. To shield and protect. To open and enclose. We all protect the inner space within.*



**4. Bob Teasdale**

***Ball and Chain***

Recycled Steel

136 x 86 x 42cm

**\$850**

*The Ball and Chain is symbolic of the tie that farmers have to their land. The curves are from horse-drawn cart rims cut in half. The rims, barbed wire and chain comes from a farm in Young NSW.*





**5. Edward Ramsay**

***Arboreal Venus***

Timber

180 x 80 x 30cm

**\$2,500**

*This is a naturally formed slab of brown pine enhanced by the sculptor and Mother Nature.*



**6. Kassandra Bossell**

***Could Bee (Blue Banded Native Bee)***

Bamboo, fabric, wire, solar lights

240 x 350 x 350cm

**\$2,000**

*Our native Blue Banded Bees are a tiny but essential part of our interdependent mesh of organisms. This giant version is a hope wish for focus on the future that Could Bee.*



**7. Jane Ritchens**

***Sylvestris heliocalis II (Forest sun systems)***

130 x 30 x 30cm

*Handmade merino felt, fencing wire and white mahogany timber*

**\$850**



**8. Liz Hughes**

***Tattooed Torso***

Clay, china, tile mosaic

75 x 40 x 40cm

**\$3,500**

*My clay torso has been quietly sitting unadorned within my garden space where I spend as much time as possible. It's time to break out and be proudly tattooed in time for Sculpture on the Farm!*



**9. Eva Kellermann**

***A Space Between***

Soapstone

36 x 12 x 7cm

**\$800**

*This abstract image is about one shape splitting in two, creating a space between which I see as freedom to think as an individual.*



**10. Gerdi Schumacher**

***My Hanging Garden***

Textile - Felted

210 x 120 x 20cm

**\$2,800**

*My Hanging Garden is sculptured felt; using different wool - coarse and fine - allows me to shape and form. I integrated silk and metallic fibers to achieve a more vibrant and tactile effect.*



**11. Rosemary Reynolds**

***The Body Within***

Ceramic, glaze

20 x 30 x 18cm

**\$375**

*The organic beauty of our bodily forms are explored within this work. Our outer layer is represented, while our inner wealth exists as a void- like empty shell.*



**12. Annie Herron**

***The Birds on the Branch***

Cast Bronze and Copper Leaf

66 x 96 x 16cm

**\$3,500**

*Birds are my story tellers. I enjoy the sense of whimsy they create.*





### 13. Philippa Graham

#### ***Trust***

Painted timber

65 x 65 x 20

**\$1,200**

*Implicit in our beings is to trust one another.*



### 14. Vera Robinson

#### ***The Kiss***

Bronze on granite base

13 x 25 x 13cm

**\$2,000**

*The work is inspired by kissing seals*



### 15. Meredith Woolnough

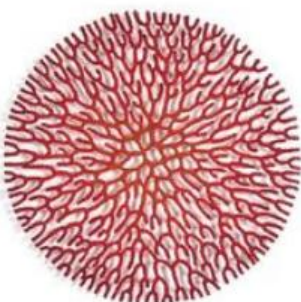
#### ***Nature Study 1 - Summer Leaves***

Embroidery

40 x 40 x 4cm

**\$500**

*Embroidered sculpture inspired by seasonal leaves*



### 16. Meredith Woolnough

#### ***Nature Study 2 - Coral Network***

Embroidery

40 x 40 x 4cm

**\$500**

*Embroidered sculpture inspired by the patterns found in the branching network of gorgonian fans*



**17. Meredith Woolnough**  
***Nature Study 3 - Corallite Pattern***

Embroidery  
 40 x 40 x 4cm

**\$500**

*Embroidered sculpture inspired by the patterns in coral skeletons*



**18. Meredith Woolnough**  
***Nature Study 4 - Ginkgo Circle***

Embroidery  
 40 x 40 x 4cm

**\$500**

*Embroidered sculpture inspired by the vibrant yellow leaves of Ginkgo biloba tree in autumn.*



**19. Peter Lewis**  
***Equus - FreeSpirit 1/5***

Stainless Steel on granite base  
 36 x 40 x 9cm

**\$2,800**

*This work is inspired by the wild spirit of horses thundering across wide open spaces with limitless energy and a great sense of freedom.*



**20. Eva Kellermann**  
***Before Flight***

Soapstone  
 35 x 12 x 8cm

**\$850**

*Always observing the graceful movement of birds. This one taking a moment before flight.*





**21. Sandra Jones**  
**American Boxer Dog**

Ceramic  
 14 x 11 x 13cm

**\$700**

*This is a sculpture of Alabama. She is a loving American Boxer. The work inspired me when I stayed with her for a house sit. Her strong markings makes her different from the rest.*

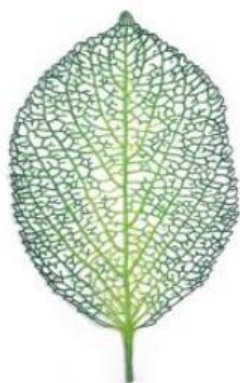


**22. Felicity Cavanough**  
**Delight**

Tie wire and ironbark  
 60 x 50 x 20cm

**\$1,450**

*Initiating contact with you through love, this sculpture invites you to immerse yourself in life, lose yourself in those beautiful every day occurrences that are often so fleeting or overlooked*



**23. Meredith Woolnough**  
**Hydrangea Leaf**

Embroidery  
 90 x 74 x 4cm

**\$2,200**

*Embroidered sculpture inspired by the internal vein patterning of hydrangea leaves*



**24. Meredith Woolnough**  
**Coral Fan**

Embroidery  
 90 x 74 x 4cm

**\$2,750**

*Embroidered sculpture inspired by the phenomenon of coral fulorescence*



**25. Felicity Cavanough**

***Land Your Catch***

Tie Wire and Ironbark

62 x 45 x 23cm

**\$990**

*We all have goals in this life, spoken or unspoken; let them be realised. Allow yourself to land big*



**26. Denise Lithgow**

***Scribbly Gum Vessel***

Felt - Merino and Corriedale Wool, machine embroidery, matt varnish

68 x 30 x 30cm

**\$425**

*The Scribbly Gum Eucalyptus trees play host to the larvae of the scribbly gum moths which leave distinctive scribbly burrowing patterns on the bark. This has inspired my felt sculpture.*



**27. Eric Werkhoven**

***The Offering***

Autoclaved aerated cement/plaster.

69 x 30 x 20cm

**\$2,000**

*The Offering is a combined effort between two people, including the dialogue of creating an idea, in theory or in our imagination. A companion as in nurturing, towards a common greater good.*



**28. Denise Lithgow**

***No Man's Land***

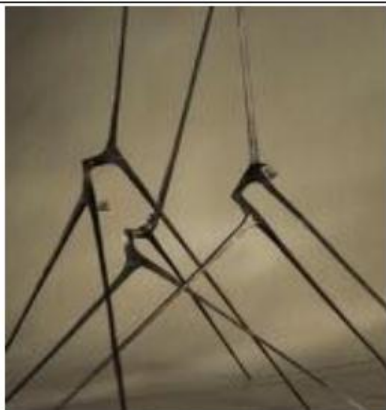
Felt, Cross breed wool, wire, matt varnish

63 x 33 x 23cm

**\$380**

*No man's land is the land that is unoccupied or under dispute between two parties who leave it unoccupied due to fear or uncertainty. I've created this piece, which to me represents that unknown.*





**29. Will Maguire**  
***Contrary Man (small)***

Forged steel  
 40 x 40 x 50cm

**\$800**

*Inspired by primitive WW1 caltrops, angular confused human forms expressing the tension and contradictions of war.*



**30. Denise Lithgow**  
***Banksia Bark Vessel***

Felt, Merino Wool, Silk, Matt Varnish  
 54 x 23 x 26cm

**\$425**

*My inspiration for my sculptures comes from the landscape. Growing up in the bush with banksias has brought back this memory of the feel of the banksia bark.*



**31. Philippa Graham**  
***The Entreaty***

Bronze  
 30 x 30 x 20cm

**\$2,500**

*Trust in one another is the foundation of humanity.*



**32. Amanda Harrison**  
***High Flyer 7/10***

Bronze  
 27 x 28 x 16cm

**\$3,200**

*High Flyer is about trust and love, but also about pure shared joy in the parent-child relationship. Even in this precarious position, the child is safe, the parent's limbs acting as a safety net.*



### 33. Lee Blattmann

#### ***Crystal Consonance***

Stainless Steel, Ceramic, Acrylic

50 x 60 x 20cm

**\$4,200**

*Crystal Consonance was born on a thought of creating crystal forms, which when highly polished would take on the hard and austere appearance of rock crystals grown deep in the earth.*



### 34. Robyn Werkhoven

#### ***Head Case***

Ceramic, paint & wood

35 x 51 x 10cm

**\$2,500**

*This project challenged me to create a myriad of small heads evocative of the many facial expressions from the dramatic, melancholic, and contorted to the elated, joyous and spiritual.*



### 35. Sinan Revell

#### ***Lotus Shoes - Ming Blue***

Ceramic

13 x 14 x 19cm

**\$350**

*Chinese " Lotus " shoes for tiny, bound feet designated a woman of class. This ancient practice gave women status by crippling them. Today people surgically alter their appearance to conform.*



### 36. Philippa Graham

#### ***In this moment of quiet***

Bronze

15 x 12 x 12cm

**\$1,100**

*Just relishing those quiet moments of reflection.*





**37. Lee Blattmann**

***Nexus***

Stainless Steel, Acrylic, Wood Base

140 x 36 x 36cm

**\$3,900**

*"As we travel through time and space"*



**38. Feyona Van Stom**

***Forest Walks***

Ceramic - pitfired

49 x 31 x 21cm

**\$1,100**

*Pitfired works follow a tradition - using the wood and flame to give the characteristic shadings. The torso uses the flames twists and turns. I love the effect this has on my work.*



**39. Peter Tilley**

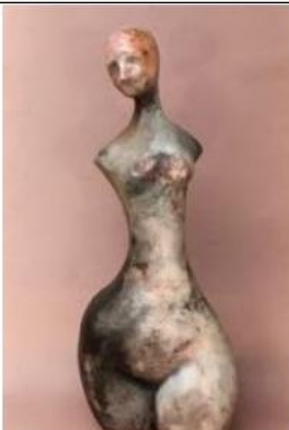
***Bound to the Body***

Painted resin, painted steel on a corten steel base

49 x 51 x 23cm

**\$3,000**

*My recent works are concerned with the symbolic effects of the cast shadow. The imagery draws on the Greek legend of Narcissus and Jung's theory of the shadow as the 'dark side of the self'.*



**40. Amanda Harrison**

***Autumn Blush***

Ceramic Pit-fired

61 x 25 x 18cm

**\$1,200**

*An elegant torso brushed with natural colours born of the flames from a bonfire in an earthen pit.*



#### 41. Natalie Duncan

##### **Arinna**

Ceramic

120 x 60 x 60cm

**\$2,000**

*Clay. Ceramic. Cup, Saucer, Teapot. Kitchen. Domestic. Woman. Mother. Mother Earth. Earth. Dirt. Mud. Clay.*



#### 42. Jenny Green

##### **Let's Dance**

Painted Steel

80x 50 x 53cm

**\$3,900**

*Musical, harmonious, melodic, expressive, emotional! Steel turns to music and dance.*



#### 43. Jan Shaw

##### **Seedpods**

Mixed media

130 x 20 x 20cm

**\$550 each - 3**

*The Seedpods Installation reflects on the importance of Seedpods for all humanity. Seedpods carry a precious cargo spread by wind, water and wing awaiting their moment to burst forth in germination.*



#### 44. Carolyn Rendle

##### **Moulds**

Fortified lace, metal mesh, resin

Various 140 x 120 x 60cm

**\$2,500 each**

*My art practice mainly involves textiles and recycled materials. I have been influenced by members of my family who have been wonderful embroiderers and crocheters.*





**45. Felicity Cavanough**

***Balancing Act***

Copper and Sandstone

170 x 30 x 50cm

**\$2,900**

*This kinetic sculpture tips and sways but recovers quickly to always find her balance. All of us have a talent, a skill or something that we are good at. Balancing Act is about focussing on our skills when life pushes us off balance.*



**46. Feyona Van Stom**

***Shadows***

Ceramic - raku fires

44 x 28 x 21cm

**\$1,100**

*Raku fired on earthenware clay, this sculpture of a torso primitively fired takes on the colour of the land. Raku gives it the crackle as well as the black reduced areas.*



**47. Chris Fussell**

***Kookaburra***

Steel, aluminium, copper

35 x 90 x 60cm

**\$4,000**

*An Exercise as a break from painting and possible commission.*



**48. Vlase Nikoleski**

***Structure for Human Behaviour***

Cast aluminium, 19th century hand cut ironbark shingles, galvanised iron

300 x 200 x 200cm

**\$10,000**

*Human needs and wants remove the living heart of the tree which is segmented to build a temporary structure. The bark remains as a shadow of the former living tree. Nature meets human technology.*



**49. Jenny Green**

***The Sentinel***

Painted aluminium

193 x 60 x 55cm

**\$15,000**

*'The Sentinel' has its origin in the figure. Standing tall amongst the trees, the work builds on the tension between space and material, to capture a moment of deep reflection.*



**50. Vivienne Lowe**

***Leaf***

Steel

120 x 300 x 150cm

**\$2,700**

*The skeletalized form of this sculpture ambiguously represents the effects of harsh drought & heat conditions but also with hope. Red tipped leaves mark new growth in many trees, it symbolizes renewal.*



**51. Inge King**

***Summer Solstice 3/5***

Stainless Steel

62 x 60.5 x 30cm

**\$50,000**

*"Inge, a liberated woman, was a thinker of clarity and a massive achiever. The wellbeing of Australia's culture is richer for her ... those of us that did know her were touched by her magic." Stuart Purves, Australian Galleries.*



**52. Felicity Cavanough**

***Frolic***

Copper pipe and wire

150 x 120 x 70cm

**\$15,000**

*As though stumbling on a hidden treasure, this sculpture invites you into a shared moment of delight between a mother and her child, relishing in their environment and each other.*





**53. Vivienne Lowe**

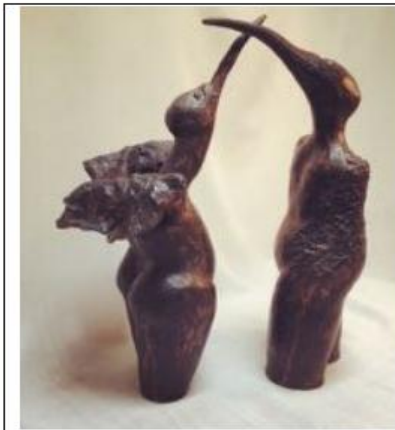
***Cross Currents***

Steel

41 x 29 x 27cm

**\$550**

*References the movement and flow of water or air and its complexities arising from many sources. This is similar to life's stresses which can come at you from all directions.*



**54. Meike Davis**

***The Other Pair***

Ceramic Clay - Oxides

50 x 19 x 18cm

**\$1,200 (\$600 each)**

*Making my sculpture was a very unconscious and playful way of combining both human and bird elements. In Egyptian mythology the Ibis was an object of religious veneration.*



**55. Vera Robinson**

***The Pear***

Cement and fibreglass with copper paint, acid etched

30 x 20 x 18cm

**\$600**

*The pear is such a unique yet variable sculptural shape, it reminds me of my childhood and the pear trees on the farm. The sculpture base material is called "Pal Tiya".*



**56. Bridget Whitehead**

***A Place to Rest***

Limestone, Treated Pine

130 x 40 x 30cm

**\$700**

*A place to rest is a quiet moment of peace and calm, a chance to pause in the business of modern life. It is a reminder to look around and appreciate the small things that contribute to a rich life.*



**57. Vera Robinson**

***Arising***

Bronze

40 x 46 x 16cm

**\$4,000**

*Arising is inspired by the rising water level on our Australian coastline*



**58. Vera Robinson**

***Bush Phoenix***

Bronze

48 x 48 x 16cm

**\$3,000**

*Bush Phoenix is inspired by the NSW bushfires impacting on the very old eucalypts, and my fascination with Nature's way of their renewal.*



**59. Kathy Rosenmeyer**

***Nest***

Found wire, ceramic, concrete

60 x 70 x 80cm

**\$3,250**

*A love of history and antiques has resulted in a need to find ways to reuse old materials and rework them into sculptural pieces with the added benefit of recycling.*



**60. Rosemary Reynolds**

***Reflections Within***

Bronze, black paint, coloured wax, beeswax

5 x 43 x 24cm

**\$850**

*Being witness to the organic beauty of the anatomy laboratory has allowed me to compare the inner body with surrounding visible textures in our natural environment. Their similarity surrounds us.*





**61. Bob Teasdale**  
***The Family Sloe - 5***

CorTen Steel

100 x 100 x 10cm

**Large \$450 Medium \$350 Small \$250**

*Looking in the garden early one morning I observed some snails "hurrying" to their hiding place out of the hot sun.*



**62. Jenny Green**

***Life Lines***

Painted stainless steel rod

185 x 61 x 40 & 178 x 70 x 40cm

**\$9,900**

*Life Lines reflects on relationships, commitment and companionship; lives and experiences shared. Stainless steel rod forms the figures while the voids reveal life's context, the world around us.*



**63. Peter Lewis**

***SunWorship 3***

Dry glazed ceramic

65 x 45 x 30cm

**\$1,200**

*This work is inspired by the ancient Aztec and early Egyptian block-form sculptures. It is pyramid in shape with its head tilted upwards looking towards the sun god, hence the title 'SunWorship'.*



**64. Will Phipps**

***Steel Steed***

Steel and wood

160 x 120 x 120cm

**\$6,500**

*Approx 400 hours made from reobar and 4mm flat bar. Lots and lots of welding and grinding and also my first attempt at a steel sculpture and last too, I'd reckon. I do find solitude in grinding.*



**65. Leeroy Chapman**

***Plain figure, 2018***

Wood, concrete

190 x 55 x 45cm

**\$1,700**

*This work takes a constructivist approach to traditional figurative sculpture. Exploring how process can relate to wider ideas of the human development of our natural environment.*



**66. Michael Garth**

***Resurrection***

Bronze, Timber

140 x 180 x 100cm

**\$12,500**

*We once worshiped idols and got told not to. It couldn't have been any worse than what we do now.*



**67. Natalie Duncan**

***Ishtar***

Ceramic

180 x 60 x 60cm

**\$3,000**

*Clay. Ceramic. Cup, Saucer, Teapot. Kitchen. Domestic. Woman. Mother. Mother Earth. Earth. Dirt. Mud. Clay.*



**68. Annie Herron**

***The Interloper***

Cast Bronze and Copper Leaf

118 x 28 x 10cm

**\$3,000**

*Birds are my story tellers. I enjoy the sense of whimsy they create.*





**69. Michael Garth**

***Two Sides***

Carved Timber, Aluminium and Steel

120 x 120 x 50cm

**\$7,500**

*People have told me my work has a morbid look but I actually think the skeleton is a marvel of engineering and the perfect example of function and form.*



**70. Roger Head**

***Colorblind***

Wood and acrylic polymer

21 x 27 x 19cm

**\$320**

*Exercise in construction completed in NAS Hons. Formal architectural construction, consisting of a modified post and lintel. Edition of colour - enhance or detract?*



**71. Sandra Jones**

***Ralph***

Ceramic

15 x 12 x 13cm

**\$700**

*Ralph is for the animal lovers. He is a generic breed. Made of ceramic, an indoor sculpture.*



**72. Lee Blattmann**

***After The Harvest***

Electroplated Steel, Blue Stone

53 x 50 x 35cm

**\$3,800**

*The dark, hard, angular geometry of the pieces, when combined together, created moody and dangerous forms that speak of dead organic matter, slashed and strewn about by some great heartless machine.*



**73. Leeroy Chapman**

***Sunburnt, 2017***

Metal

29 x 29 x 32cm

**\$800**

*This work is a found object construction of the antique armillary sphere. Exploring ideas of motion and the effects of modern development on our environment.*



**74. Will Maguire**

***Busy Gardner***

Forged steel, Australian hardwood, stone and bronze

33 x 44 x 18cm

**\$1,800**

*Weeds shall be removed.*



**75. Roz Stampfli**

***Chooks in the City***

Wire

140 x 100 x 100cm

**\$2,250**

*My City Chooks serve me well. No work, but no produce!*



**76. Roger Head**

***High Court***

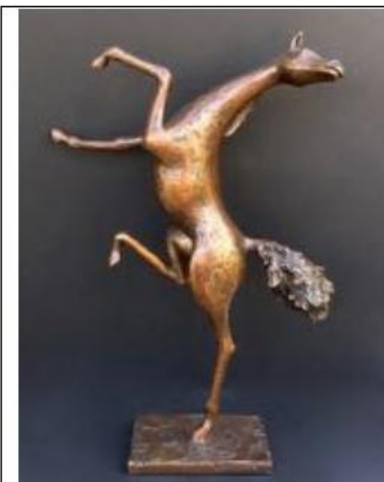
Wood, Synthetic polymer

46 x 32 x 25cm

**\$425**

*Wooden Maquette for corten steel sculpture. Completed as part of Honours final year at NAS. A modified U-shaped armature is tipped on it's side, producing a small formal modern piece.*





**77. Amanda Harrison**

***Wild One 3/10***

Bronze

46 x 24 x 14cm

**\$2,800**

*The sculpture 'Wild One' exudes a tumultuous energy as a wild horse rears in excitement, free and fiercely defiant, reflecting its turbulent relationship with the Australian landscape and people.*



**78. Michael Garth**

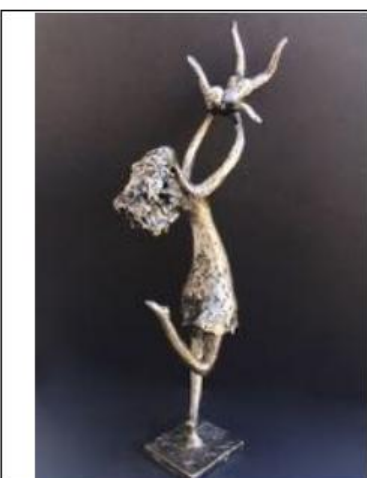
***Natural Environment***

Bronze and carved timber

90 x 49 x 70cm

**\$1,850**

*Bin chickens (Australian Ibis) are survivors and have learnt to adapt to the planet better than most. They are Ozzie Flamingos.*



**79. Amanda Harrison**

***To the Stars and Back 3/10***

Stainless Steel

48 x 26 x 12cm

**\$2,500**

*An energetic expression of the relationship between parent and child. Despite being precariously balanced, almost floating in the air, both mother and child are bound together in love and trust, sharing the joy of life.*



**80. Sandra Jones**

***Molly and Rex***

Ceramics

10 x 18 x 10cm

**\$700**

*Two Dashhounds on the move. Now they have each other. Love at first sight.*



**81. Roz Stampfli**

***Acrobat Pair***

Wire + concrete

100 x 32 x 40cm

**\$1,900**

*A 3D line drawing in wire showing the strength, the trust and the freedom of the Acrobats.*



**82. Feyona Van Stom**

***Primitif***

Ceramic woodfired

36 x 20 x 22cm

**\$680**

*Primitif is a head but a primitive head with only splashes of glaze to give it personality. It can be displayed inside or outside.*



**83. Leeroy Chapman**

***Standing figure, 2018***

Wood

52 x 13 x 13cm

**\$600**

*Standing figure is a small sculpture for the large outdoor piece that accompanies it. Exploring the ideas of scale and composition of lines in space.*



**84. Peter Lewis**

***Equus - Warrior 1/5***

Stainless Steel on granite base

66 x 53 x 15cm

**\$10,000**

*I was inspired by Alexander the Great's horse, Becuphalus, and have tried to capture the electric energy and spirit of the battle horse.*





**85. Natalie Duncan**

***Inanna***

Ceramic

150 x 60 x 60cm

**\$2,200**

*Clay. Ceramic. Cup, Saucer, Teapot. Kitchen. Domestic. Woman. Mother. Mother Earth. Earth. Dirt. Mud. Clay.*



**86. Martin Bass**

***The Williams, The Allyn and the Green Hills Between***

Ceramic on concrete board

110 x 31cm

**\$450**

*This work is a mosaic formed from smashed household ceramics - plates, mugs, etc. Many of the ceramic pieces incorporated have been sourced locally from the Dungog St Vincent de Paul op shop.*



**87. Peter Tilley**

***Another Self***

Steel

85 x 18 x 12cm

**\$5,500**

*My recent works are concerned with the symbolic effects of the cast shadow. The imagery draws on the Greek legend of Narcissus and Jung's theory of the shadow as the 'dark side of the self'.*



**88. Bill Cummins**

***Joanne***

Stainless Steel and Painted steel

**\$10,000**

*Joanne was my first non-geometric large sculpture.*



**89. Paul Brent**

***The Jester II***

Painted mild steel and Ni Hard steel

**\$4,000**

*Deconstructed plasma cut steel skeletons - the joker becomes the jester!*



**90. Paul Brent**

***The Triffid***

Stainless Steel

240 x 110 x 90cm

**\$6,500**

*All knowing, all seeing eye.*



**91. Ionas Kaltenbach**

***Still Angles***

Steel

200 x 60 x 100cm

**\$3,000**

*'Still Angles' aims to capture different dynamics and perspectives, that are all ultimately connected and linked. I was thinking of my family when I designed and built this piece.*



**92. Gavin Vitullo and Braddon Snape**

***Voyage***

Hessian, wood and beeswax

290 x 20 x 37cm

**\$4,500**

*Curiosity prompts discovery, as we embark on a Voyage of poetic form captured in natural sculpted materials.*





**93. Susan Dorothea White**  
***Stretching the Imagination***

Bronze

57 x 179 x 55cm

**\$70,000**

*Inspired by the idiom 'stretching the imagination', large hands stretch a face into a broad smile. Views through spaces in eye sockets and cheeks spark imagination. The surface is rounded and tactile.*



**94. Edward Milan**

***Think Engine***

Reclaimed Mixed Media

220 X 175 X 155cm

**\$9,000**

*I try to suggest movement and potential. Not fixed, able to move on and out. I enjoy working at this scale. It feels good.*



**95. Will Maguire**

***Contrary man (large)***

Forged steel

500 x 400 x 500cm

**\$8,000**

*Inspired by primitive WW1 caltrops, angular confused human forms expressing the tension and contradictions of war.*



**96. David Stott**

***The star that fell to earth***

Timber/ metal

320 x 160 x 370cm

**\$5,400**

*Stars, domain of astronomers, mathematicians. But what is our experience ... the magical shapes from story books, mythology, science fiction. Magically I present a star. The sheer impossibility ...*



**97. Paul Brent**

***Buy Australian Goods***

*Welded and bolted steel*

200 x 200 x 100cm

**\$4,000**

*Made from 1800's steel, to encourage governments and the people to buy Australian.*



**98. Braddon Snape**

***Nothin' but Sky***

*Welded steel sculpture*

270 x 380 x 250cm

**\$33,000**

*This work beckons one to immerse oneself, to focus one's view of the expansive Australian sky in a moment of isolation. As one projects one's head through the portal one sees nothin' but sky.*



**99. Roz Stampfli**

***Labyrinth***

*Rope*

35 x 800 x 800cm

**Ephemeral**

*Used since the earliest of civilisations, this classical unicursal design has been used for decoration and for religious and therapeutic uses in the form of a meditative walk.*



**100. Nigel Dobson**

***Celestial Gateway***

*Steel*

240 x 300 x 300cm

**\$12,000**

*I am interested in beacons, locating devices and where we as humans roam on the planet. This sculpture is an exploration of those thoughts.*



## Sculpture on the Farm encourages you to visit these next three sculpture events



[www.sculpturesinthegarden.com.au](http://www.sculpturesinthegarden.com.au)

### **Sculptures in the Garden - Mudgee**

Saturday 6 - Sunday 7 October 2018

*Sculptures In The Garden* is an exciting not for profit event that showcases Australian sculpture in a beautiful rural setting within a private garden and vineyard in Mudgee NSW. Proceeds raised from the exhibition go towards a public art sculpture walk in Mudgee's Lawson Park. All gate proceeds and catering revenue go to the Guide Dogs NSW/ACT.



[www.sculpturebythesea.com](http://www.sculpturebythesea.com)

### **Sculpture by the Sea - Bondi**

18 October - 4 November 2018

*Sculpture by the Sea* returns to the Bondi Beach to Tamarama Beach coastal walk as the world's largest free to the public sculpture exhibition.

See the spectacular coastal walk transformed into a 2km long sculpture park over three weeks featuring 100 sculptures by artists from Australia and across the world.



[www.sculptureinthevineyards.com.au](http://www.sculptureinthevineyards.com.au)

### **Wollombi Sculpture in the Vineyards**

02 November - 18 November 2018

*Wollombi Sculpture in the Vineyards* is a celebration of arts and culture held across four boutique vineyards and Wollombi's historic village. Bring the family and relax in a nature amongst the sculpture. Hear the inside story from our friendly art expert, join an artist-led creative workshop or chat about wine making and intricacies of growing a good wine-making grape with one of our experienced local vignerons.

## DUNGOG - IN THE FOOTHILLS OF THE BARRINGTONS



**Celebrating the arts, local food and rural life**

[www.visitdungog.com.au](http://www.visitdungog.com.au)

[www.sculptureonthefarm.com](http://www.sculptureonthefarm.com)